

Bovine Cysticercosis

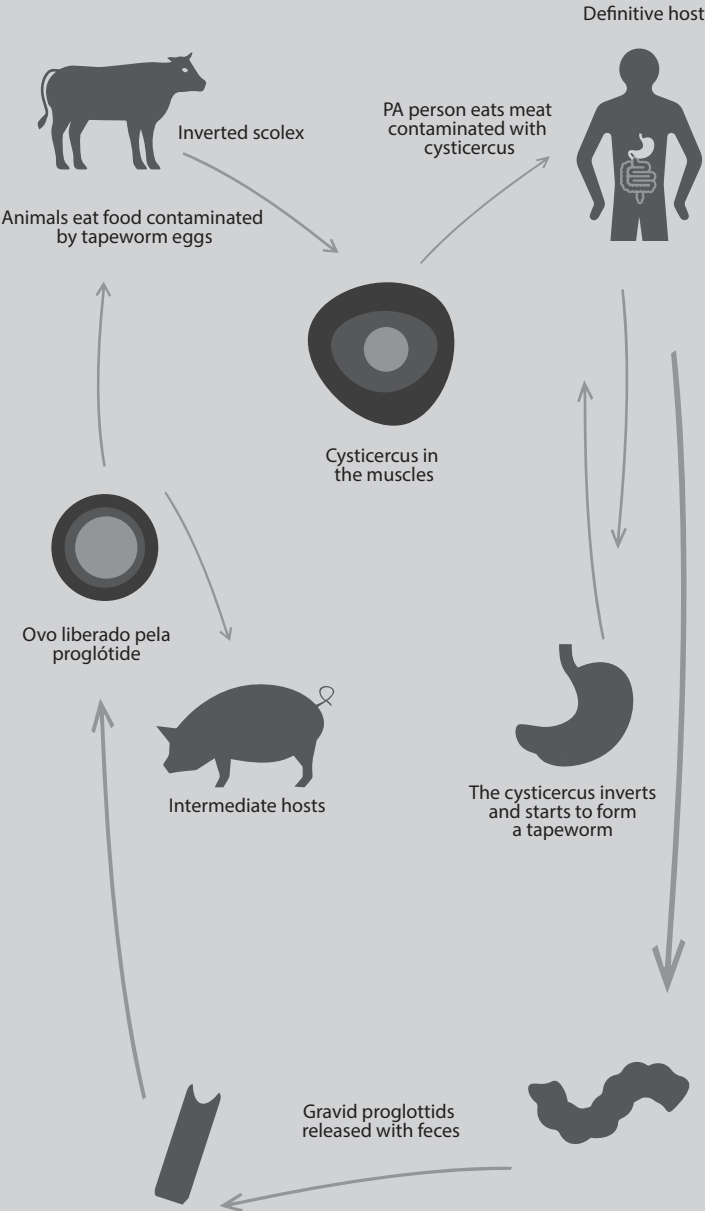
Take good care of your herd
- stay alert



www.marfrig.com.br
bemestaranimal@marfrig.com.br



Chain of transmission of bovine cysticercosis



Gravid proglottids released with feces

Human beings are the main disseminator of the disease since the parasite remains in their intestines. The parasite releases approximately 400,000 eggs per day in human feces.

How it occurs in bovines

Bovines acquire the disease through the ingestion of eggs released by human beings. The infection occurs when bovines ingest water, grass or other food contaminated by feces of people that carry the worm; it can be water from rivers, irrigated crops, dams, reservoirs, and pastures. *Cysticercus* develops within 60 to 75 days after the egg is ingested. In a few weeks, or up to 9 months, the cysts begin to die and calcify. This process can be accelerated by the use of parasiticides.

Danger in consuming contaminated beef

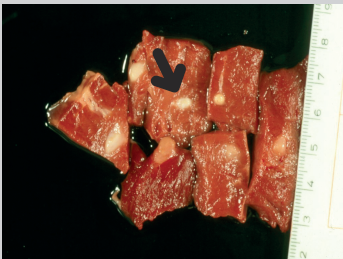
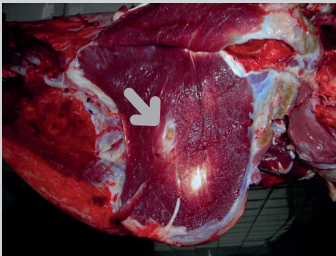
When human beings eat raw or undercooked beef that contain live cysticerci, these cysticerci evolve into the adult form of a worm, which initiates a new cycle for the parasite.

Care and prevention

It is possible to know if your herd has a low or high index of cysticercosis through the slaughter carried out at the slaughterhouse. To prevent this, some caution must be taken, such as:

- Deworming – bovines, domestic animals, and people who have direct contact with food-producing animals. This deworming must be periodic and always guided by a professional;

- Observing all sources of drinking water for animals and checking if there is evidence of contamination with human feces;
- Taking greater care in areas where sporadic employees are present, such as orange and sugar cane producing areas. In these areas, there is a greater incidence of human feces next to food-producing animal farms;
- Respecting the withdrawal periods of the drugs;
- Periodic testing of the people involved in the production process is also advisable.



Meat with cysticercosis